



GMT MONTHLY MEMBERSHIP PROGRESS REPORT

Results as of: 10/31/2023

Multiple District 3232

LOCATION: INDIA

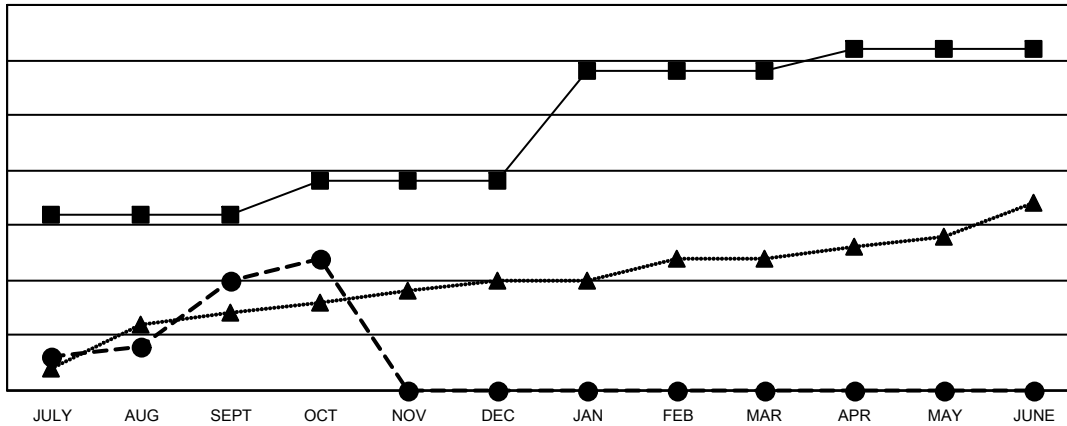
GMT: OPEN

GMT CA 6 - I

Clubs			
RESULTS FOR 2023-2024			
QUARTER	NEW CLUB GOAL	NEW CLUBS	DROPPED CLUBS
JULY/AUG/SEPT	16	10	10
OCT/NOV/DEC	3	2	4
JAN/FEB/MAR	10	0	0
APR/MAY/JUNE	2	0	0

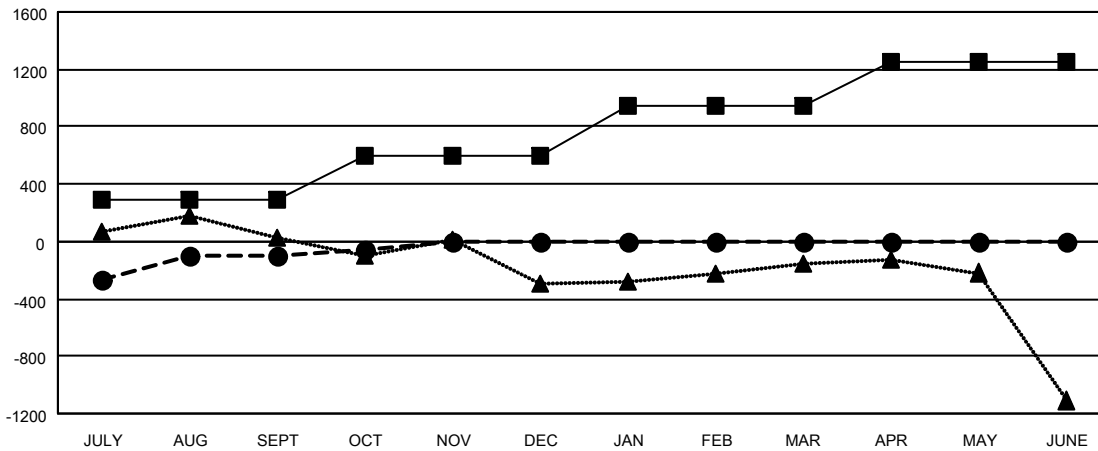
Members			
RESULTS FOR 2023-2024			
QUARTER	MEMBER GROWTH NET GOAL	MEMBER GROWTH ACTUAL	DROPPED MEMBERS ACTUAL (including transfers)
JULY/AUG/SEPT	295	834	809
OCT/NOV/DEC	305	257	201
JAN/FEB/MAR	340	0	0
APR/MAY/JUNE	315	0	0

GOALS AND ACTUAL NEW CLUBS CUMULATIVE



- - CURRENT YEAR GOALS FOR NEW CLUBS
- - CURRENT YEAR ACTUAL NEW CLUBS
- ▲ - LAST YEAR ACTUAL NEW CLUBS

GOALS AND ACTUAL MEMBERS CUMULATIVE



- - MEMBER GROWTH NET GOAL
- - MEMBER GROWTH ACTUAL
- ▲ - LAST YEAR MEMBERSHIP ACTUAL

DROPPED CLUBS: 14	163 CLUBS OF 504 ADDED 1 OR MORE NEW MEMBERS	GENDER DISTRIBUTION
		MALE 10,881 (63.16%)
		FEMALE 6,346 (36.84%)
DROPPED MEMBERS	CLICK HERE FOR CUMULATIVE MEMBERSHIP DATA	TOTAL FAMILY UNIT MEMBERS 12,234
DECEASED 18		FAMILY MEMBERS PAYING HALF DUES 8,381
CLUB CANCELLED 248		
OTHER 747		
TOTAL 1,013		